



LLPOA Boating Handbook

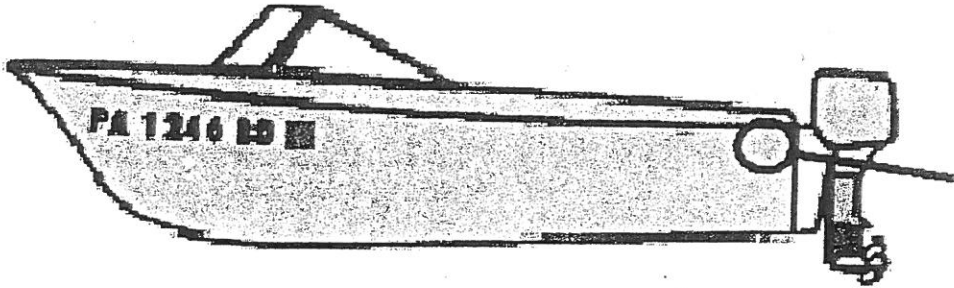
BOATING RULES & REGULATIONS

1. All watercraft operating on Lake Latonka are required to follow the legal requirements of the State of Pennsylvania and the Federal Government.
2. All watercraft operators must be seated when the boat is in motion.
3. All lake traffic is counter clockwise.
4. Maximum speed limit is 40 MPH and 3 MPH within 100 feet of shore, dam, spillway and all other designated no-wake zone areas. The entire area from the "Picnic Island" to the north end of the lake is a no-wake zone.
5. No watercraft is permitted to pass between the dam and the gate valve. Personal watercraft and other watercraft without lights must be off the lake between sunset and sunrise.
6. Water skiing and similar activities are prohibited between sunset and sunrise.
7. For water skiing and similar activities, a competent observer must be in the boat in a position to observe the progress of the person being towed. A competent observer is a person who has the ability to assess when a skier is in trouble, knows and understands hand signals and is capable of helping as needed. If you have special permission from the state (and a flag on the boat) you are exempt from this requirement.
8. Skiers count in the boat's total capacity.
9. No one is permitted to sit on the gunwale (upper edge of the side of the boat) or outside the fence on a pontoon boat when it is in motion.
10. All watercraft must be equipped with an efficient muffling system in good working order.
11. No loops, tight turns or dangerous operations are permitted.
12. Be courteous and show respect for fellow boaters at all times.
13. All boats are required to have a current Lake Latonka sticker for identification. The sticker must be placed near the upper rear side corner of the boat (both sides) within full view.
14. All watercraft owners must maintain adequate liability insurance.
15. All water craft must have the required personal flotation/safety device, (USCG approved lifejacket) for all individuals on the watercraft.
16. All boats – 16' and over must have a throwable device, type "IV" on board. Canoes and Kayaks are not required to carry a throwable device.

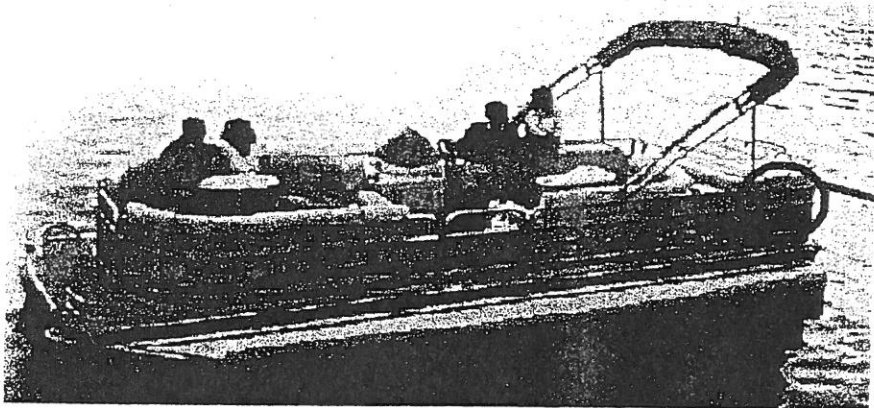
FAILURE TO COMPLY WITH THESE RULES MAY RESULT IN THE LOSS OF PRIVILEGES TO OPERATE ANY TYPE OF WATERCRAFT AT LAKE LATONKA.

ID Sticker Placement

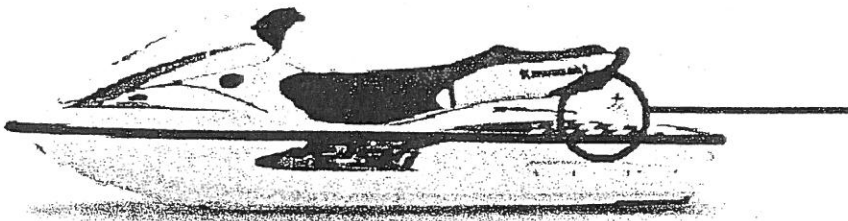
Top of Gunwale at Aft Starboard and Port Sides



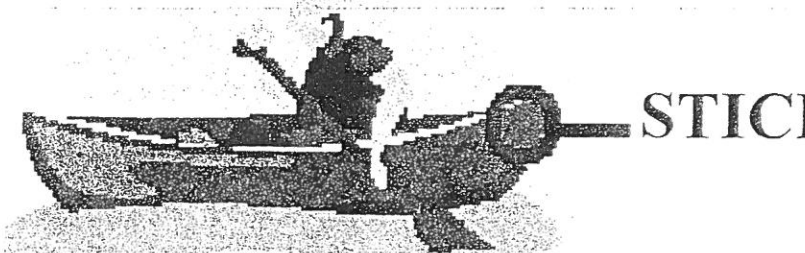
STICKER



STICKER



STICKER



STICKER